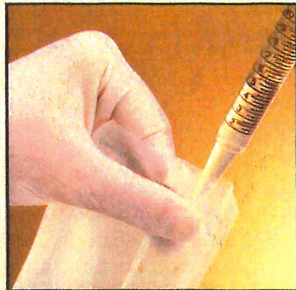


# How to use the Star\*Pac<sup>®</sup>

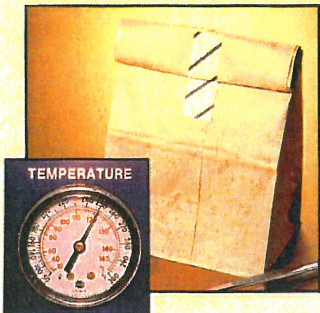
## FILLING WITH MEDIA

1. Open the Star\*Pac chamber with a slight "twist" between the thumb and forefinger.
2. Utilize either a pipet or an auto dispenser to add media to chambers.



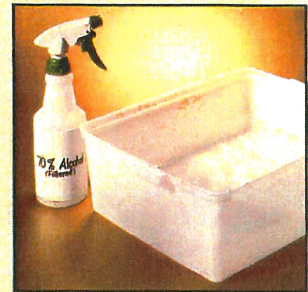
## AUTOCLAVING PROCEDURES

1. Count out 10-15 filled Star\*Pac units.
2. Fold and place Star\*Pac into a paper bag.
3. Fold the top of the bag down and seal with autoclave sensitive tape.
4. Autoclave between 121°C, 15 psi for 15 minutes. Avoid temperatures above 124°C.



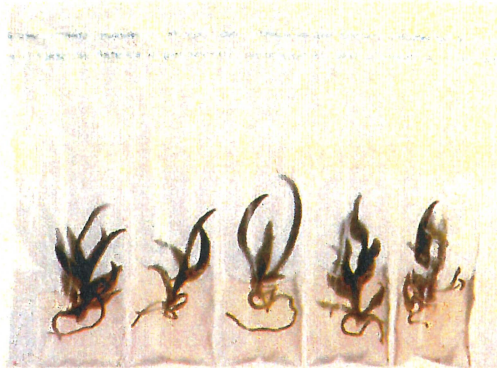
## SURFACE STERILIZING Star\*Pac<sup>®</sup> CONTAINING ESTABLISHED CULTURES

1. Rinse Star\*Pac containing established cultures with 10% sodium hypochlorite solution or spray with a 70% isopropyl alcohol solution.
2. Drain Star\*Pac on a sterile paper towel in hood.
3. Carry out transfer procedures aseptically in a laminar flow hood.

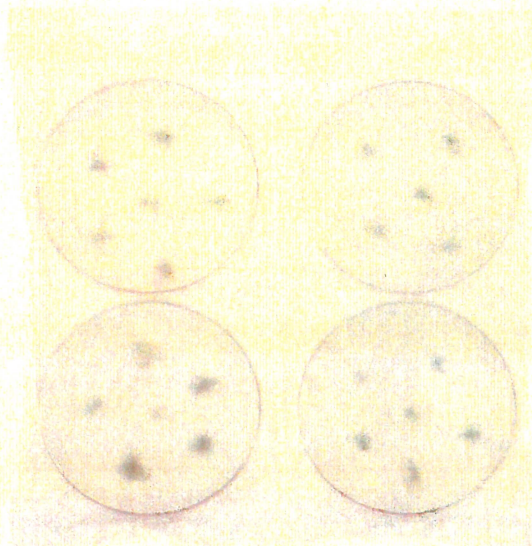


## REMOVAL OF CULTURES

1. Cut open each Star\*Pac chamber lengthwise with a scalpel. (Take care not to cut through both layers).
2. Remove the plantlets and place on a sterile working surface (i.e. a glass plate or a petri dish).
3. Divide and size plantlets.



**6" x 9" 5 Chamber**  
*Cymbidium sp.*

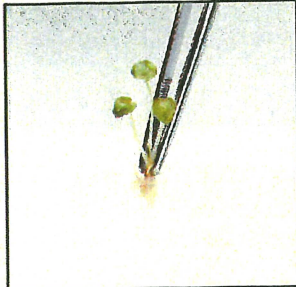


**9" x 9" Double Chamber**

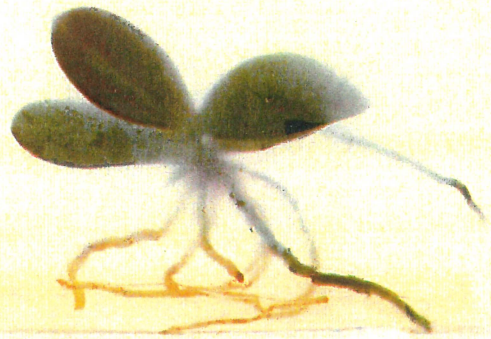
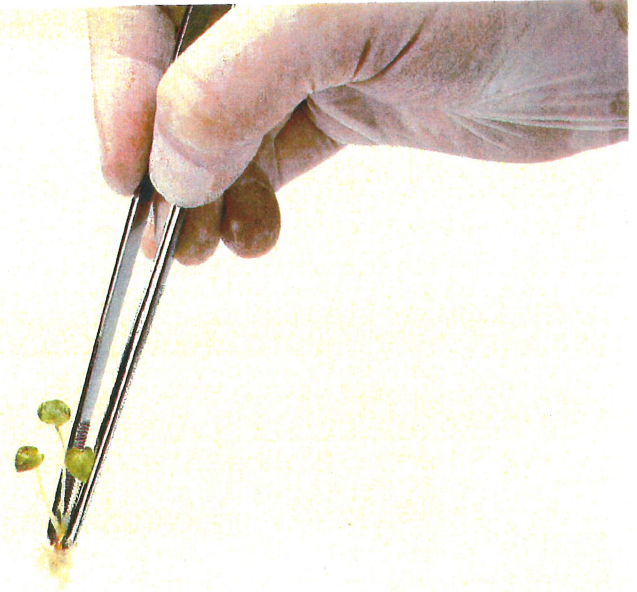
*Nephrolepis exaltata bostoniensis compacta* Stage II (Left) *Phalaenopsis sp.* Stage III (Right)



## TRANSFER OF CULTURES



1. Open each chamber by "twisting" the top of the chamber between thumb and forefinger.
2. Insert the tissue(s) with long, sterile forceps.
3. Seal Star\*Pac with a heat sealer.
4. Move cultures/plantlets to the culture area or greenhouse.



**9" x 9" Single Chamber**  
*Phalaenopsis* sp. Stage III



**9" x 18" Single Chamber**  
*Alocasia lendenii* cv. "Frydek" Stage III